



Bringing wonder to the  
lives of children, naturally!  
...and helping them to *grow up great!*



# Our Mission

to inspire joy and wonder in children, educators and communities with a heart-centered approach to early education.



# What is a Nature Explore Outdoor Classroom?



# Outdoor Classrooms

- All shapes and sizes
- All budgets
- All climates
- All program types
- Renovations or new construction









# Nature Explore Design Benefits

- Research-based & field-tested
- Multi-disciplinary team
- Collaboration and consensus
- Efficient design process
- 20+ years of learning from each project
- On-going support





# Selecting a Grant Recipient

Who is ready to  
take this on?

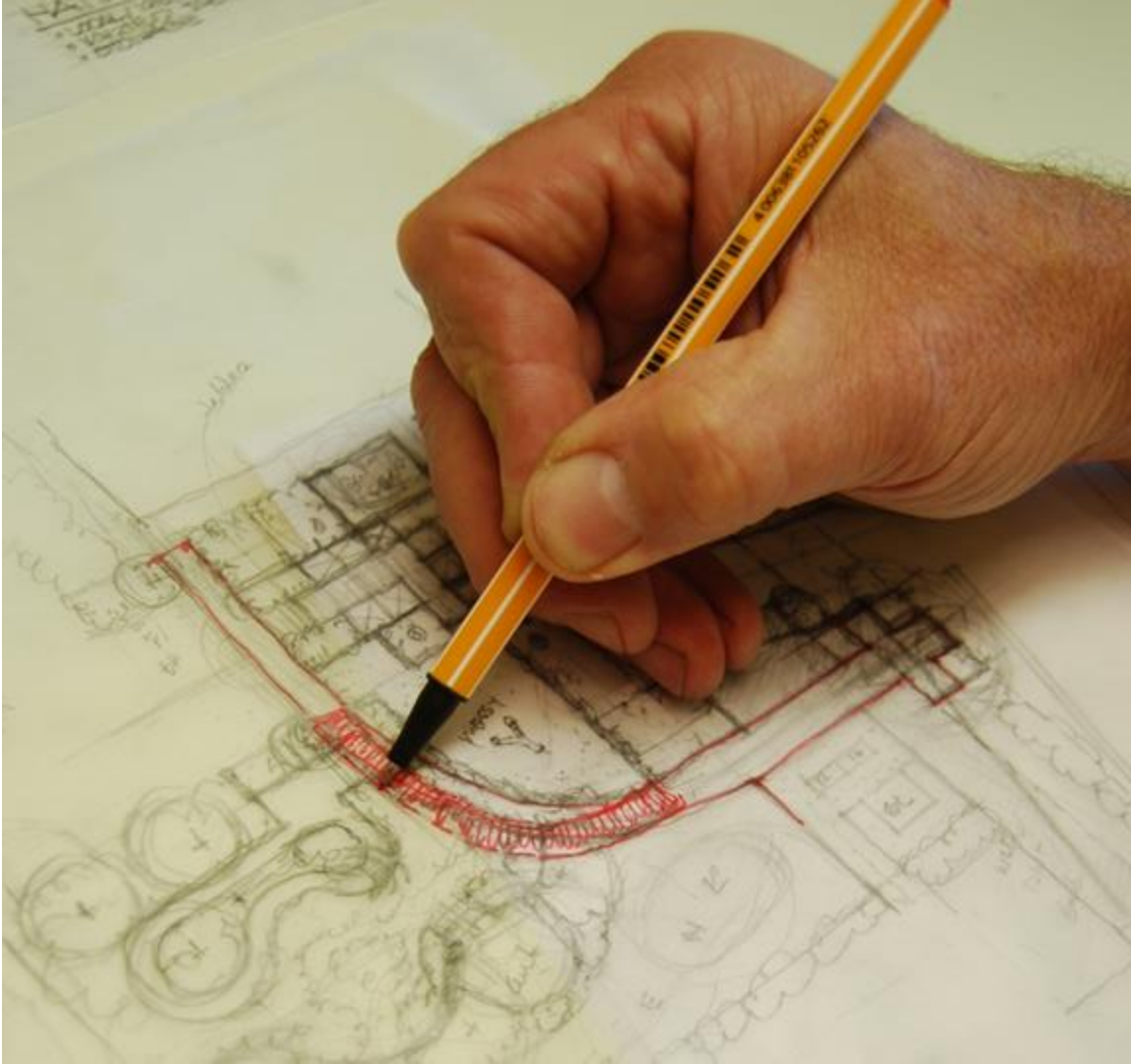
# Site Conditions that Impact Cost





# Conditions that Impact Cost

- Size
- Site conditions and access
- Demolition
- Slope
- Vegetation
- Fencing or Irrigation/water access
- Utilities, easements, permitting, & setbacks
- Program bidding requirements



# Design Process

An overview of  
our approach

# Design Process

Learn about  
your program



Understand  
your site



Develop  
your vision



# Design Process

Present your  
concept plan



Plan for success



Ongoing  
support





# Your Concept Design Package

**A ENTRY/FLEX AREA**

- NEW CONCRETE PATH
- OVERHEAD ARBORIS
- DECORATIVE CONTAINER PLANTINGS

**B GATHERING AREA**

- MOVABLE BENCH SEATING
- MULCH SURFACING

**C BUILDING AREA**

- TABLES, SEATING AND STORAGE
- VARIETY OF BUILDING BLOCKS
- STAMPED/COLORED CONCRETE (WOOD PLANKS)

**D NATURE ART AREA**

- TABLES, SEATING AND STORAGE
- VARIETY OF NATURAL LOOSE PARTS AND ART MATERIALS
- ART PANEL
- LOCAL/REGIONAL FLAGSTONE FLOORING OR STAMPED CONCRETE

**E MESSY MATERIALS AREA**

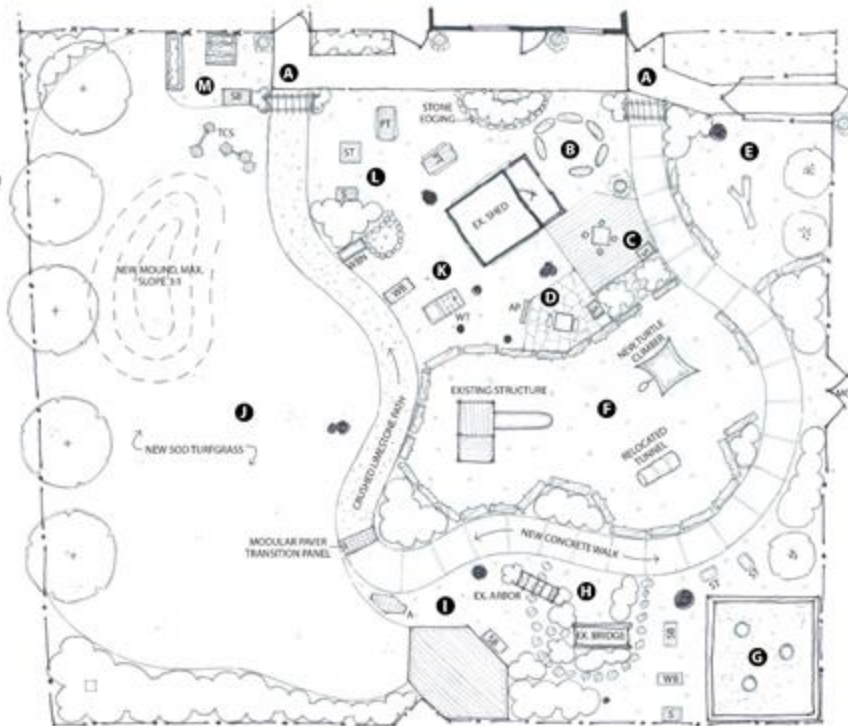
- ANCHORED NATURAL LOG PERIMETER
- GIANT TREE COOKIES-LARGE LOOSE PARTS
- MULCH SURFACING

**F CLIMBING AREA**

- LARGE, ANCHORED NATURAL LOG PERIMETER
- MULCH SURFACING
- EXISTING STRUCTURE TO REMAIN
- RELOCATE TUNNEL AND INSTALL TURTLE CLIMBER

**G SAND AREA**

- EXISTING IN-GROUND SANDBOX TO REMAIN
- SAND/SENSORY TABLE
- STORAGE BENCH
- WORKBENCH



**H SARAH'S GARDEN (PATHWAYS)**

- SENSORY PLANTS WITH VARIED COLOR/TEXTURE/ SIZE/BLOOMTIME
- FLAGSTONE STEPPING STONES
- EXISTING ARBOR, BRIDGE AND MAPLE TO REMAIN

**I MUSIC & MOVEMENT AREA**

- EXISTING STAGE TO REMAIN, REMOVE INTERIOR FENCE PANEL
- AKAMBIRA
- STORAGE FOR HAND HELD INSTRUMENTS AND DANCING SCARVES
- MULCH SURFACING

**J OPEN AREA**

- DROUGHT TOLERANT, HIGH TRAFFIC TURF GRASS
- LOW MOUND

**K SENSORY AREA**

- MULCH SURFACING
- IN GROUND DIRT DIGGING BED
- WATER TABLE (COMMUNITY PLAYTHINGS CASCADE)
- WORKBENCH
- LONG HANDLED TOOL STORAGE ON SHED

**L TODDLER GATHERING**

- TODDLER SENSORY TABLE, PICNIC TABLES
- STORAGE
- VARIETY OF RICH, SENSORY PLANTINGS

**M GARDEN AREA**

- STORAGE
- RAISED PLANTER BEDS (4'X4' TIERED AND 8'X2' RECTANGULAR)
- FRUITING TREES

**LEGEND**

- |                   |                           |
|-------------------|---------------------------|
| S: STORAGE        | A: AKAMBIRA               |
| AP: ART PANEL     | WB: WORKBENCH             |
| ST: SENSORY TABLE | PT: TABLE                 |
| SB: STORAGE BENCH | MG: MAINTENANCE GATE      |
| WBN: WORM BIN     | TCS: TODDLER CLIMBING SET |



Montessori School for Young Children | Lincoln, NE | Concept Plan | 12.02.22

©2022 Dimensions Foundation



SCALE: 1/16"=1'



NOT INTENDED FOR CONSTRUCTION





### A ENTRY/FLEX AREA

- NEW CONCRETE PATH
- OVERHEAD ARBORS (picture 1)
- DECORATIVE CONTAINER PLANTINGS

### B GATHERING AREA

- MOVABLE BENCH SEATING (picture 4)
- MULCH SURFACING

### C BUILDING AREA

- TABLES, SEATING AND STORAGE
- VARIETY OF BUILDING BLOCKS
- MODULAR PAVERS OR MULCH WITH SMALL WOOD PLATFORM

### D NATURE ART AREA

- TABLES, SEATING AND STORAGE
- VARIETY OF NATURAL LOOSE PARTS AND ART MATERIALS
- ART PANEL (picture 11)
- LOCAL/REGIONAL FLAGSTONE FLOORING OR STAMPED CONCRETE (picture 7)

### E MESSY MATERIALS AREA

- ANCHORED NATURAL LOG PERIMETER (picture 8)
- GIANT TREE COOKIES/LARGE LOOSE PARTS (picture 6)
- MULCH SURFACING

### F CLIMBING AREA

- LARGE, ANCHORED NATURAL LOG PERIMETER
- MULCH SURFACING
- EXISTING STRUCTURE TO REMAIN
- RELOCATE TUNNEL AND INSTALL TURTLE CLIMBER

### G SAND AREA

- EXISTING IN-GROUND SANDBOX TO REMAIN
- SAND/SENSORY TABLE
- STORAGE BENCH
- WORKBENCH

### H SARAH'S GARDEN (PATHWAYS)

- SENSORY PLANTS WITH VARIED COLOR/TEXTURE/ SIZE/BLOOMTIME
- FLAGSTONE STEPPING STONES (picture 9)
- EXISTING ARBOR, BRIDGE AND MAPLE TO REMAIN



### I MUSIC & MOVEMENT AREA

- EXISTING STAGE TO REMAIN, REMOVE INTERIOR FENCE PANEL
- AKAMBIRA (picture 3)
- STORAGE FOR HAND HELD INSTRUMENTS AND DANCING SCARVES
- MULCH SURFACING

### J OPEN AREA

- DROUGHT TOLERANT, HIGH TRAFFIC TURF GRASS
- LOW MOUND
- COMMUNITY PLAYTHINGS TODDLER CLIMBING SET (picture 5)

### K SENSORY AREA

- MULCH SURFACING
- IN GROUND DIRT DIGGING BED (picture 10)
- WATER TABLE (COMMUNITY PLAYTHINGS CASCADE)
- WORKBENCH
- LONG-HANDED TOOL STORAGE ON SHED

### L TODDLER GATHERING

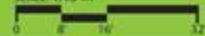
- TODDLER SENSORY TABLE, PICNIC TABLES
- STORAGE
- VARIETY OF RICH, SENSORY PLANTINGS

### M GARDEN AREA

- STORAGE
- RAISED PLANTER BEDS (4'X4' TIERED AND 8'X2' RECTANGULAR) (picture 2)
- FRUITING TREES

### LEGEND

S: STORAGE	A: AKAMBIRA
AP: ART PANEL	WB: WORKBENCH
ST: SENSORY TABLE	PT: TABLE
SB: STORAGE BENCH	MG: MAINTENANCE GATE
WBN: WORM BIN	TCS: TODDLER CLIMBING SET



BASE MAP CREATED FROM MEASUREMENTS TAKEN BY HAND IN THE FIELD. NO SITE SURVEY MADE AVAILABLE AT TIME OF DESIGN CONSULTATION  
 Approximate quantities are for your convenience only and have been developed for cost estimation, not construction. Confirm quantities with site layout prior to ordering.

### A ENTRY AREA/WALKWAYS

- EXISTING CONCRETE TO REMAIN
- +/- 975 SF CONCRETE WALKWAY, 5'- WIDE
- +/- 20 SF TRANSITION PAVERS, MEET FLUSH WITH CONCRETE WALK
- +/- 560 SF CRUSHED LIMESTONE PATHWAY, 5' WIDE, 3" COMPACTED DEPTH WITH GEOTEXTILE AND 4" DRAINAGE COURSE, MEET FLUSH WITH TRANSITION PAVERS
- TWO OVERHEAD ARBORIS, PERMANENTLY INSTALLED, (ADD ALTERNATE, SEE SOW)

### B GATHERING AREA

- EXISTING MULCH AREA TO REMAIN, ADD ADDITIONAL MULCH TO MEET FLUSH WITH CONCRETE WALK, SEE SURFACING TOTALS

### C BUILDING AREA

- +/- 210 SF MODULAR PAVERS, OR MULCH WITH SMALL WOOD PLATFORM

### D NATURE ART AREA

- +/- 140 SF IRREGULARLY SHAPED FLAGSTONE
- ONE VERTICAL ART PANEL, PERMANENTLY INSTALLED, PROVIDED BY OWNER, SEE SOW

### E LARGE LOOSE PARTS/MESSY MATERIALS AREA

- +/- 635 SF, EXISTING MULCH TO REMAIN, ADD ADDITIONAL TO MEET FLUSH WITH CONCRETE WALK, SEE SURFACING TOTALS
- 35 +/- LF NATURAL LOG PERIMETER (10'-20" DIA. X 3'-8" LENGTH), STABILIZE TO PREVENT TIPPING/ROLLING
- 8'-9" LOG OF INTEREST, SEE SOW

### F CLIMBING AREA

- +/- 1,650 SF, EXISTING MULCH TO REMAIN, TOP OFF TO 12" DEPTH (9" DEPTH, SETTLED), TAPER TO MEET CONCRETE PATH
- 165 +/- LF NATURAL LOG CONTAINMENT/PERIMETER (10'-20" DIA. X 3'-8" LENGTH), STABILIZE TO PREVENT TIPPING/ROLLING
- RELOCATED FREESTANDING TUBE CLIMBER
- INSTALL TURTLE CLIMBER (PROVIDED BY OWNER, SEE SOW)
- MAINTAIN 6' CLEAR "USE ZONE" BETWEEN CLIMBERS AND PERIMETER LOGS, SEE NOTES ON PLAN

### G SAND AREA

- EXISTING SANDBOX (+/- 350 SF) TO REMAIN, REPAIR/ REPLACE LUMBER BORDER (ADD ALTERNATE, SEE SOW)
- SOURCE AND PLACE 3 LARGE STUMPS (WIDER THAN THEY ARE TALL) TO BE USED AS WORK SURFACE IN SANDBOX
- EXISTING MULCH SURFACING, TOP OFF TO MEET FLUSH WITH CONCRETE WALK, SEE SURFACING TOTALS

### SURFACING TOTALS (MULCH)

- GATHERING/SENSORY AREA: +/- 1,880 SF @ 4" DEPTH
- MESSY MATERIALS AREA: +/- 635 SF @ 4" DEPTH
- CLIMBING AREA: +/- 1,651 SF @ 12" DEPTH (9" SETTLED)
- SAND/PATHWAYS/MUSIC AREA: +/- 1,130 SF @ 4" DEPTH

### LEGEND

	= MULCH AT APPROX. 4" AND 9-12" DEPTHS		= PLANT BED
	= FLAGSTONE SURFACING		= SOD
	= FIVE FOOT WIDE CONCRETE SIDEWALK		= CRUSHED LIMESTONE PATH
	= STAMPED CONCRETE, WOOD PLANK		

### H SARAH'S GARDEN (PATHWAYS)

- EXISTING ARBOR AND BRIDGE TO REMAIN
- EXISTING MULCH TO REMAIN, TOP OFF TO MEET CONCRETE WALK, SEE SURFACING TOTALS
- +/- 55 LF OF SECONDARY PATHWAYS, QUANTITY OF FLAGSTONE STEPPING STONES WILL VARY BASED ON SIZE AND SPACING
- PLANTINGS: EXISTING PLANT TO REMAIN, ADD NON-TODDLE KID FRIENDLY "SENSORY" PLANTS, VARIOUS COLOR/TEXTURE SIZE/BLOOMTIME, MAX HEIGHT 30"; SEE PLANT MATERIAL TOTALS.

### I MUSIC & MOVEMENT AREA

- EXISTING STAGE TO REMAIN, REMOVE INTERIOR FENCE PANEL, SEE SOW
- INSTALL AKAMBRA AS SHOWN (PROVIDED BY OWNER)
- EXISTING MULCH TO REMAIN, ADD ADDITIONAL TO MEET CONCRETE WALK, SEE SURFACING TOTALS

### J OPEN AREA

- +/- 5,355 SF NEW SOD (HIGH TRAFFIC, DROUGHT TOLERANT), STRIP EXISTING MULCH (STOCKPILE FOR REUSE IN OTHER AREAS), ADD 6" TOPSOIL, AMEND WITH COMPOST
- LOW MOUND, MAX SLOPE 3:1 (ADD ALTERNATE, SEE SOW)

### K SENSORY AREA

- EXISTING MULCH TO REMAIN, SEE SURFACING TOTALS
- DIRT DIGGING BED: 20 +/- LF STONE LINED PERIMETER, 8"-12" SMALL BOULDERS
- 30 +/- SF FRIBBLE SOIL AT 12" DEPTH (1.1 CY)

### L TODDLER GATHERING

- EXISTING MULCH TO REMAIN, TOP OFF TO MEET CONCRETE WALK, SEE SURFACING TOTALS
- +/- 30 LF STONE EDGING AROUND ADJACENT PLANT BED, SEE SOW

### M GARDEN AREA

- EXISTING MULCH TO REMAIN, TOP OFF TO MEET CONCRETE WALK, SEE SURFACING TOTALS
- FILL WOOD PLANTER BOXES WITH 4" DRAINAGE GRAVEL, MIX OF TOP SOIL, POTTING SOIL AND COMPOST, SEE SOW

### PLANT MATERIAL

- 1,800 +/- SF PLANTING BEDS, AMEND SOIL AS NEEDED
- ADD 3" LAYER HARDWOOD LANDSCAPE MULCH
- MIX OF GROUND COVER, 12"-30" HEIG. PLANTS, ORNAMENTAL GRASSES AND SMALL SHRUBS, SEE SOW
- MAINTAIN VISIBILITY THROUGHOUT SPACE



Montessori School for Young Children | Lincoln, NE Material Quantities Estimate





Dimensions Educational Research Foundation

## Project Summary First Presbyterian Day School | Hilton Head, SC

### Provided by:

Galvin Ludovici, MLA & MCRP  
Nature Explore Designer

Kirsten Haugen, MA  
Nature Explore Education Specialist

January 12, 2022

Dear Jen,

Thank you for deepening your commitment to connect children with the natural world by creating a Nature Explore Outdoor Classroom! As you transform your space, you are joining a growing number of schools, early childhood programs, nature centers, zoos, parks, and other public spaces that are creating Nature Explore Outdoor Classrooms in the places where children spend their days. Please view this nation-wide network of Certified Nature Explore Classrooms at [natureexplore.org](http://natureexplore.org) and learn more about the work of Dimensions Educational Research Foundation that makes these spaces possible.

In collaboration with your team, our designer-educator team developed the included concept plan for your outdoor classrooms. It's grounded in field-tested, research-based principles for creating effective spaces that support children's interactions with the natural world and personalized for your program and space by interweaving the thoughtful ideas and feedback from your team.

Your concept package includes:

- This project summary – noteworthy features and considerations unique to your space
- A black & white concept plan – helpful to share with the team who will implement your design
- A full color concept plan – useful for sharing with your community and to support fundraising efforts
- Materials estimates – quantities or volumes of surfacing and plant material, plus suggested furnishings and loose parts needed to complete the space

7700 A Street | Lincoln, NE 68510 | 402-467-6112 | [info@natureexplore.org](mailto:info@natureexplore.org) | [natureexplore.org](http://natureexplore.org)



Dimensions Educational Research Foundation  
7700 A Street  
Lincoln NE 68510  
Phone: (402) 467-6112  
Fax: (402) 467-6118

## ESTIMATE

Date: 1/02/2022  
Estimated: EST3206

### Send To Address

The First Presbyterian Day School  
540 William Hilton Parkway  
Hilton Head Island SC 29928  
United States  
(843) 681-3695

### Bill To Address

The First Presbyterian Day School  
540 William Hilton Parkway  
Hilton Head Island SC 29928  
(843) 681-3695

### Ship To Address

The First Presbyterian Day School  
540 William Hilton Parkway  
Hilton Head Island SC 29928  
United States  
(843) 681-3695

PO #

Expires  
2/19/2023

Customer Project

Orders containing two or more items may be delivered in multiple shipments.

Item	Description	Quantity	Rate	Amount
3914	Cactus Rain Stick, Large	1		
6920	Cactus Rain Stick, Small	1	\$17.00	\$17.00
5138	StepBox, Junior (please allow approximately 2-4+ weeks to ship)	2	\$10.00	\$20.00
5213	StepCajon, Standard (please allow approximately 2-4+ weeks to ship)	1	\$299.00	\$299.00
6993	Animal Shakers, Set of 3	1	\$329.00	\$329.00
4868	Dancing Scarves, 5 sets of 12	2	\$29.00	\$58.00
5226	Shape Sorter Bench	1	\$159.00	\$159.00
9548	Baby's First Tree Blocks, set of 12	1	\$34.00	\$34.00
6982	Wooden Vehicles, Set of 4	2	\$32.00	\$64.00
7012	Wooden Curved Board	2	\$36.00	\$72.00
3938	Imagination Fabric - Yellow	1	\$199.00	\$199.00
3939	Imagination Fabric - Blue	1	\$35.00	\$35.00
3940	Imagination Fabric - Green	1	\$35.00	\$35.00
4265	Imagination Fabric - Red	1	\$35.00	\$35.00
4266	Imagination Fabric - Orange	1	\$35.00	\$35.00
5254	Imagination Fabric - Purple	1	\$35.00	\$35.00
7036	Garden Hand Tools, set of 3	1	\$35.00	\$35.00
7037	Watering Can	2	\$13.00	\$26.00
7058	Outdoor Mat, Medium (5'1" x 6'6") - Ocean Blue	2	\$13.00	\$26.00
3936	Giant Tree Cookies (10" Dia.), Set of 10 (please allow approximately 4-8+ weeks to ship)	1	\$79.00	\$79.00
			\$129.00	\$129.00

MONTESSORI SCHOOL FOR YOUNG CHILDREN SCOPE OF WORK- **DRAFT 01.30.23**

BASE BID (including mulch & bed prep).....	\$ _____
(plant allowance to be determined following submission of initial bid)	
ADD ALTERNATE #1- Integral color in concrete sidewalk.....	\$ _____
ADD ALTERNATE #2- Modular Paver Transition .....	\$ _____
ADD ALTERNATE #3- Arbor Installation (price per arbor).....	\$ _____
ADD ALTERNATE #4- Building Area: Modular Pavers .....	\$ _____
ADD ALTERNATE #5- Rebuild Sandbox Frame .....	\$ _____

GENERAL CONDITIONS

- Contractor is responsible for locating and protecting all existing utilities as applicable.
- Contractor shall work with owner to coordinate schedule and site access.
- Contractor is responsible for final construction. Nature Explore shall have no liability or responsibility for actions or inaction in connection with any Nature Explore items or any damage or liability that arises during construction or use.
- Contractor is responsible for protecting all existing trees. Coordinate with owner on protection plan.

CONCEPT PLAN DESIGN IS BASED ON HAND-WHEELED FIELD MEASUREMENTS. NO SURVEY INFORMATION MADE AVAILABLE TO THE DESIGN TEAM AT TIME OF CONSULTATION. FINAL LAYOUT MAY VARY FROM CONCEPTUAL DESIGN BASED ON CONDITIONS IN THE FIELD. MATERIAL QUANTITIES AND VOLUMES ARE FOR ESTIMATING PURPOSES ONLY. **CONFIRM PROJECT PRICE AND FINAL QUANTITIES WITH FIELD LAYOUT PRIOR TO ORDERING AND INSTALLATION OF CONSTRUCTION MATERIALS. Confirm with Owner actual project cost with initial estimate to determine any necessary budget adjustments.**

GENERAL DEMO/SITE PREP (Includes but may not be limited to...)

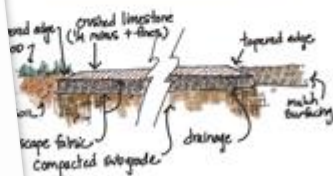
- Care should be taken to protect all utilities and existing trees.
- Limited earthwork/excavation as needed for installation of proposed surfaces, sod, concrete footings, and to maintain positive drainage. Prepare subgrade as needed to install pathways.
- Final plan layout may vary from conceptual design based on conditions in the field. Adjust layout as needed per field conditions and to maintain existing drainage patterns. Confirm final layout with Owner.

MATERIALS

3" wide concrete sidewalk, per local standard practice. Meet flush with existing concrete (max. threshold 1/8" or 1/4" with 1/8" chamfer). Meet ADA requirements (5' width, max. slope 4.5%, max. cross-slope 2%). +/- **975 SF**

**ADD ALTERNATE #1:** Include integral color (light to medium brown) Confirm final color with owner prior to installation.

3" wide pathway, 3" depth compacted crushed limestone (1/4" minus plus fines) standard practice. Compact subgrade, add drainage course, install over fabric. Compact in 1" and 2" lifts. No hard edging. Taper edges to allow mulch and sod to overlap with tapered sections-eliminating trip hazards.



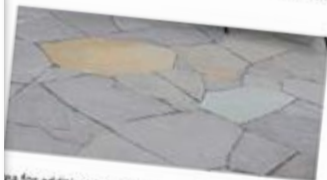
COMPACTED CRUSHED LIMESTONE PATH  
to scale

**ADD ALTERNATE #2:** Modular Paver Transition (2' x 5') between concrete sidewalk and crushed stone (per local standard practice). +/- **20 SF**

Existing mulch area to remain as needed to meet flush with concrete and concrete pathways. Compact as needed to prevent trip hazards cause by settling. Approximate existing mulch product. **Determine current mulch depths during site visit to inform quantity needed.**

Apply ground mulch @ 9" settled depth in Climbing Area and Messy Materials area. Compact 25% compaction. **Determine current mulch depths during site visit to inform quantity needed.** Taper edges as needed to meet flush with entry points.

Area: Install irregularly shaped flagstone, per local standard practice. Joint max. 1/8". Meet flush with adjacent pavers (max. threshold 1/8"). Slope for drainage. +/- **140 SF**



See plan for additional surfacing information.

Arbor by owner.

**#3:** Assemble and install 4-post wood arbor (provided by owner). Exact photo for pricing:





# Outdoor Classroom Budget

Design Fees and  
Implementation Costs



# Design and Workshop Fees

- Outdoor Classroom Design Consultation
    - Concept Design Package
    - Post Design Services/On-going Support **\$15,000**
  - 3-hour Professional Development Workshop  
“Using Your Outdoor Classroom” **\$5,000**
- Total Cost      \$20,000**

# Smaller Budgets

- Small size (< 5,000 SF)
- Relatively flat
- Existing fencing/boundaries
- Simple & minimal custom work
- Primarily volunteer-based
- Donated materials
- Minimal hardscaping, if any
- No irrigation









# Smaller Budget Breakdown Example

- Design & Workshop Fees \$20K
  - Furnishings and Equipment \$10K-15K
  - Loose Parts \$1K-3K
  - Construction Cost \$25K-35K
    - Site Prep
    - Surfacing
    - Plant Material
    - Structures
- Total Cost \$56K-\$73K**

# Mid-Range Budgets

- Mid-size (5,000 - 8,000 SF)
- Limited earthwork and drainage
- New or modified fencing
- Limited custom features
- Mix of volunteers and contractors
- Upgraded surfacing & hardscaping
- May include irrigation







# Mid-Range Budget Breakdown Example

- Design & Workshop Fees \$20K
  - Furnishings and Equipment \$15-25K
  - Loose Parts \$3K-5K
  - Construction Cost \$35K-65K
    - Site Prep
    - Surfacing
    - Plant Material
    - Structures
- Total Cost \$73K-\$115K**

# Larger Budgets

- Larger area (8,000+ SF)
- Complex grading, drainage and earthwork
- More custom work and high-end furnishings
- Installed by a skilled contractor
- Mature and dense plant material
- Irrigation, fencing and shade structures
- Construction documents needed





OUTDOOR  
CLASSROOM  
A CLASSROOM FOR CHILDREN  
3 TO 5 YEARS OF AGE  
WITH ADULT SUPERVISION

DO NOT  
ENTER



# Larger Budget Breakdown Example

- Design & Workshop Fees \$20K
  - Furnishings and Equipment \$25-50K+
  - Loose Parts \$5K+
  - Construction Cost \$65K-100K+
    - Site Prep
    - Surfacing
    - Plant Material
    - Structures
- Total Cost \$115K-\$175K+**

# Next Steps

- Identify your grant recipient.
- Discuss details with Nature Explore and grant recipient.
- Give recipient the okay to submit their request to Cybergrants.
- By February 2024 –  
Recipient submits PNC grant request.





# Next Steps (cont.)

- By March 11, 2024 – CCR Team submits the 20th Anniversary Grant Pool Request Form.
- Upon approval, recipient receives funds.
- Upon approval and agreed upon terms, recipient begins project in collaboration with Nature Explore.
- *Celebrate the groundbreaking and grand opening!*





Grow Up Great®



Bringing wonder to the  
lives of children, naturally!

...and helping them to *grow up great!*



# Thank you!

Lana Gilson  
Client Relations and Outreach  
402-474-7966  
LanaG@natureexplore.org









Professional  
Development



Outdoor Classroom  
Design Services



Natural  
Products



Our mission is to inspire joy and wonder in children, educators, and communities with a heart-centered approach to early education.

501(c)3 Nonprofit Organization







Sign in for certificate,  
feedback & resources



[natureexplore.org/sign-in](https://natureexplore.org/sign-in)



# Thank you

[natureexplore.org](https://natureexplore.org)